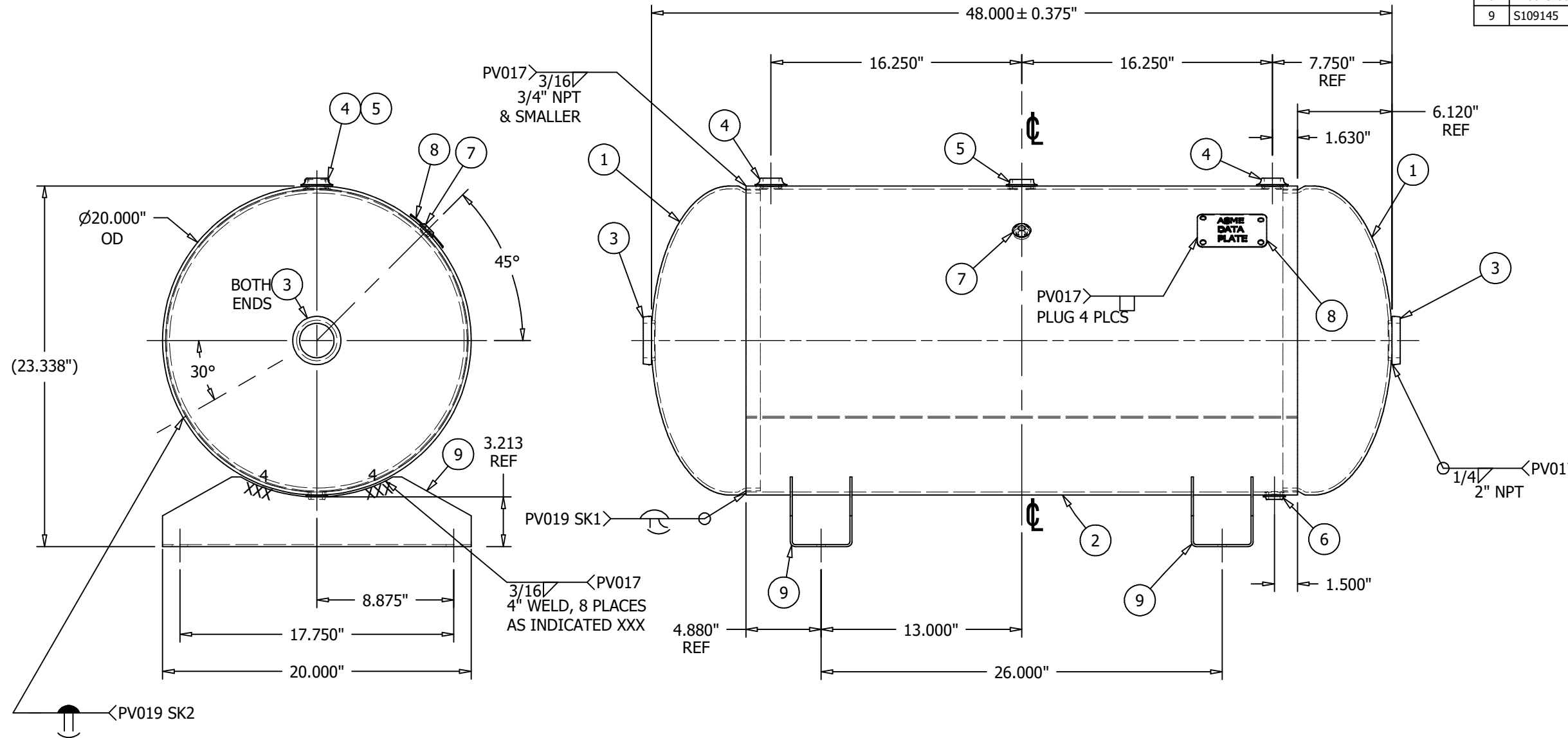


ITEM	P/N	DESCRIPTION	QTY
1	H20187J-414G	HEAD , 0.177 M/ 0.187 N x 20" 2:1 JOGGLE W/ 1.96" SF SA414-G	2
2	A10029-300-SL	SHELL BURNT 0.200 in X 35.760 in X 20.00 OD SA414G	1
3	F102000	WELD FLG 2.000 NPT CS SA181-70 FLAT 398 O/R	2
4	F100750	WELD FLG 0.750 NPT CS SA181-70 FLAT 254	2
5	F101000	WELD FLG 1.000 NPT CS SA181-70 FLAT 255	1
6	F100500	WELD FLG 0.500 NPT CS SA181-70 FLAT 253	1
7	F100250	WELD FLG 0.250 NPT CS SA181-70 FLAT 251	1
8	A10029-300-NP	NAME PLATE FOR A10029-300 A1011CS-B	1
9	S109145	CHANNEL FOOT 0.135 A1011CS-B 4.000 X 4.500 X 20.00	2



\*\*SHELL CUT SIZE IS REFERENCE ONLY  
 \*\*CPLG & FITTING 0.50 EXT PROJ TYP  
 \*\*HEAD THICKNESS SHOWN IS SPECIFIED MINIMUM  
 \*\*RADIUS INSIDE PROJECTED EDGES OF NOZZLES 1/8" MIN  
 \*\*SEE PAGE 2 FOR FINISH  
 \*\*FLANGE BOLT HOLES STRADDLE TANK C/L EXCEPT AS NOTED  
 \*\*ALL DIMS IN INCHES UNLESS NOTED OTHERWISE  
 \*\*IMPACT TEST EXEMPT PER UG 20(f)  
 20" X 48" 300# HORIZONTAL AIR RECEIVER  
 NOTES

TRAVELER REQUIRED  No      FIXTURE REQUIRED  No      IF YES THEN FIXTURE # \_\_\_\_\_

<b>RELEASED TO PRODUCTION</b>		TOLERANCES ARE PER EN1370 STEEL FAB STANDARD TOLERANCES UNLESS OTHERWISE SPECIFIED		DESIGN & CALCULATIONS COMPLY WITH ASME CODE SECTION VIII, DIV1. LATEST EDITION	
SALES ORDER#		QTY:		<b>SFI STOCK</b>	
RELEASE DATE:		NB/SERIAL#			
HEAD THK: <u>.177</u> MIN C.A.: <u>---</u> MAT'L <u>SA414-G</u> EFF <u>85</u> %		SHELL THK: <u>.200</u> NOM C.A.: <u>----</u> MAT'L <u>SA414-G</u> EFF <u>70</u> %		ENG. APP'L / DATE MH - 7/23/2018	
NAT'L BD: YES		STAMP " U "		QCM. APP'L / DATE BW-7/24/2018	
VOLUME: APPROX 60 GAL		MAWP <u>300</u> PSI AT <u>450</u> °F		A.I. VERIFICATION / DATE BQ-7/25/2018	
SHIPPING WEIGHT: 205 LBS		MDMT <u>-20</u> °F AT <u>300</u> PSI		<b>STEEL FAB</b>	
CRN: L4044.568013N		TEST: HYDRO AT <u>390</u> PSI			
		TEST: PNEU AT <u>390</u> PSI		BURLINGTON, ONT	
				LEBANON, VA	
				DRAWN BY: <b>MG</b> P/N <b>A10029-300</b>	
				DATE: 7/16/2018	
				PAGE 1 OF 2	
				REV 2	

REV	DATE	DESCRIPTION	ENG	QCM	AI/DATE
1	11/15/18	UPDATED TO DIVISIONAL WELD PROCEDURES	MG	BW	NA
2	8/3/21	ADDED JOINT DETAIL SK	MG	N/A	BQ 8/3/21