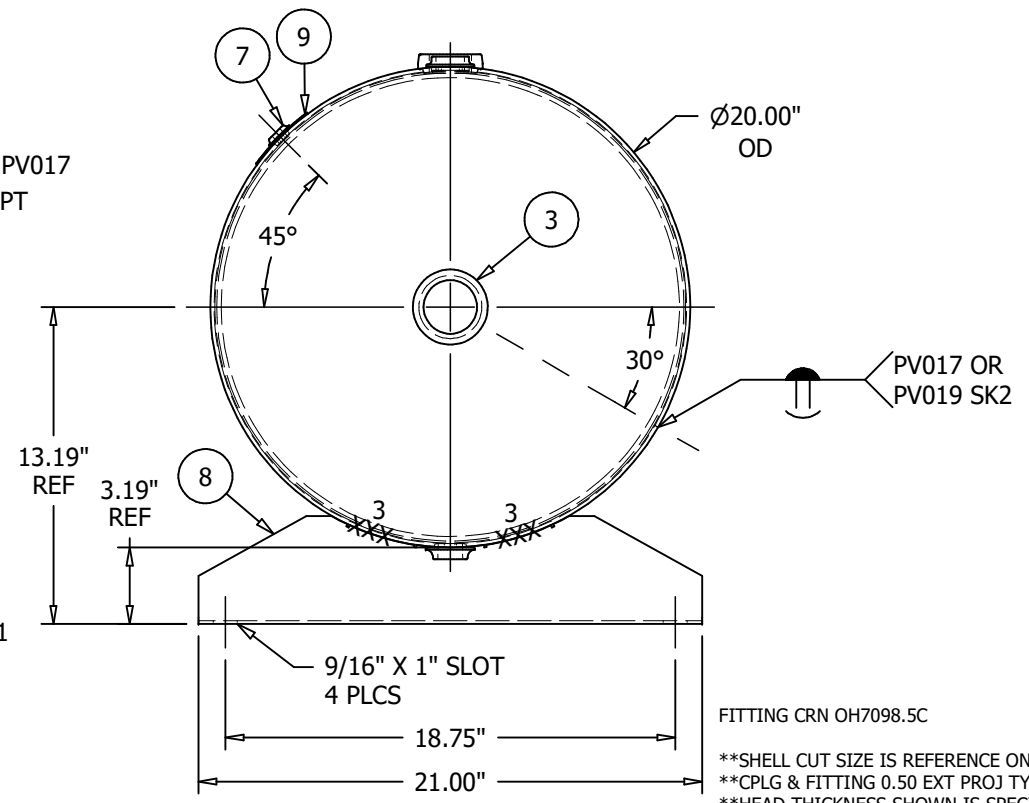
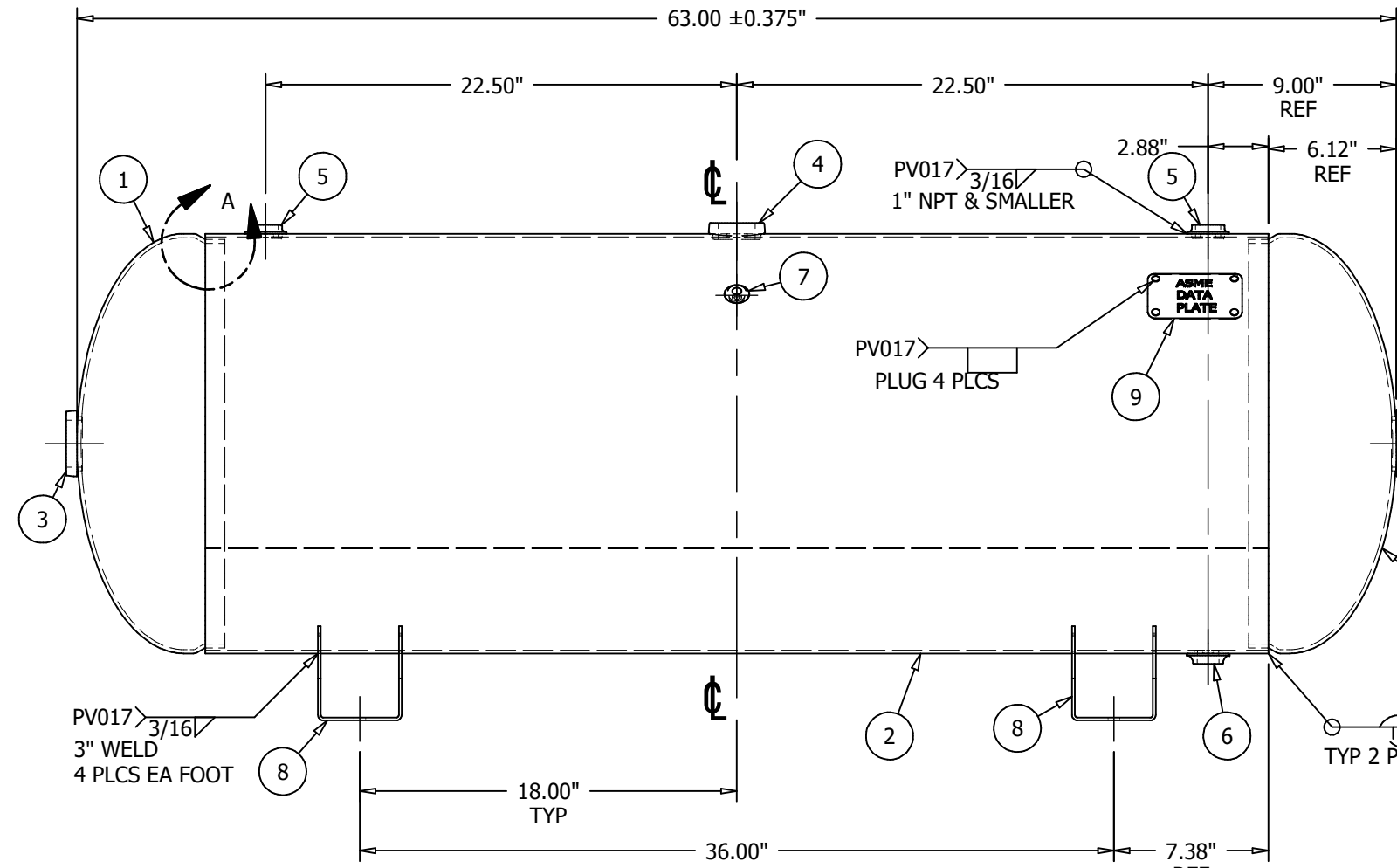
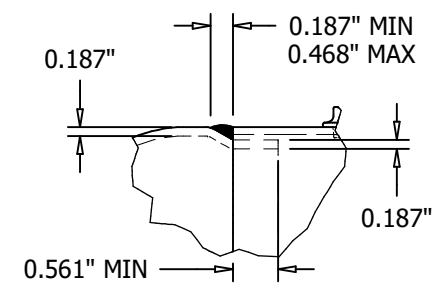


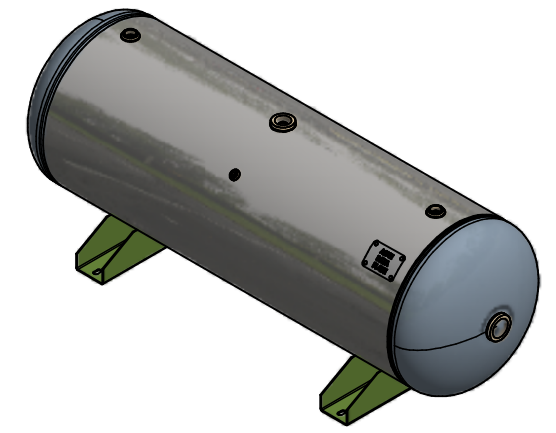
ITEM	P/N	DESCRIPTION	QTY
1	H20187J-414G	HEAD , 0.177 M/ 0.187 N x 20" 2:1 JOGGLE W/ 1.96" SF SA414-G	2
2	A10031-300-SL	SHELL BURNT 0.200 CS SA414-G 50.75 x 20.00 OD	1
3	F102000	WELD FLG 2.000 NPT CS SA181-70 FLAT 398 O/R	2
4	F101501	WELD FLG 1.500 NPT CS SA181-70 RAD 957 O/R	1
5	F101000	WELD FLG 1.000 NPT CS SA181-70 FLAT 255	2
6	F100750	WELD FLG 0.750 NPT CS SA181-70 FLAT 254	1
7	F100250	WELD FLG 0.250 NPT CS SA181-70 FLAT 251	1
8	S100039	CHANNEL FOOT 0.135 A1011CS-B 4.000 x 4.500 x21.00	2
9	A10031-300-NP	NAME PLATE FOR A10031-300 A569	1



FITTING CRN OH7098.5C
 **SHELL CUT SIZE IS REFERENCE ONLY
 **CPLG & FITTING 0.50 EXT PROJ TYP
 **HEAD THICKNESS SHOWN IS SPECIFIED MINIMUM
 **RADIUS INSIDE PROJECTED EDGES OF NOZZLES 1/8" MIN
 **SEE PAGE 2 FOR FINISH
 **IMPACT TEST EXEMPT PER UG 20(f)
 20" X 63" 300# HORIZONTAL AIR RECEIVER
 NOTES



DETAIL A



REV	DATE	DESCRIPTION	ENG	QCM	AI/DATE
2	7/11/18	REVISED NP POSTIION TO NEW STANDARD	MG	BW	BQ 7/24/18
3	10/15/18	UPDATED TO DIVISIONAL WELD PROCEDURES	MG	BW	NA
4	8/3/21	ADDED JOINT DETAIL SK	MG	N/A	BQ 8/3/21

TRAVELER REQUIRED No Yes IF YES THEN FIXTURE # **A10031**

RELEASED TO PRODUCTION		TOLERANCES ARE PER EN1370 STEEL FAB STANDARD TOLERANCES		DESIGN & CALCULATIONS COMPLY WITH ASME CODE SECTION VIII, DIV1. LATEST EDITION	
SALES ORDER#		QTY:		A10031@300PSI	
RELEASE DATE:					
NB/SERIAL#				ENG. APP'L / DATE JE - 6/17/2016	
HEAD THK: <u>.177</u> " MIN C.A.: --- MAT'L <u>SA414-G</u> EFF <u>85</u> %		MAWP <u>300</u> PSI AT <u>400</u> °F		QCM. APP'L / DATE BW-6/17/2016	
SHELL THK: <u>.200</u> " NOM C.A.: --- MAT'L <u>SA414-G</u> EFF <u>70</u> %		MDMT <u>-20</u> °F AT <u>300</u> PSI		A.I. VERIFICATION / DATE WH-6/20/2016	
NAT'L BD: YES		STAMP " U "		STEEL FAB	
VOLUME: 80 APPROX GAL		TEST: HYDRO AT <u>390</u> PSI			
SHIPPING WEIGHT: 220 LBS		TEST: PNEU AT <u>390</u> PSI		BURLINGTON, ONT	
CRN: L4044.568013N				LEBANON, VA	
				DRAWN BY: IDV P/N A10031-300	
				DATE: 6/4/2016	