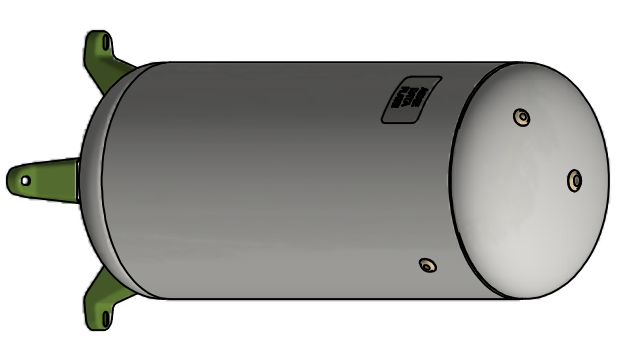
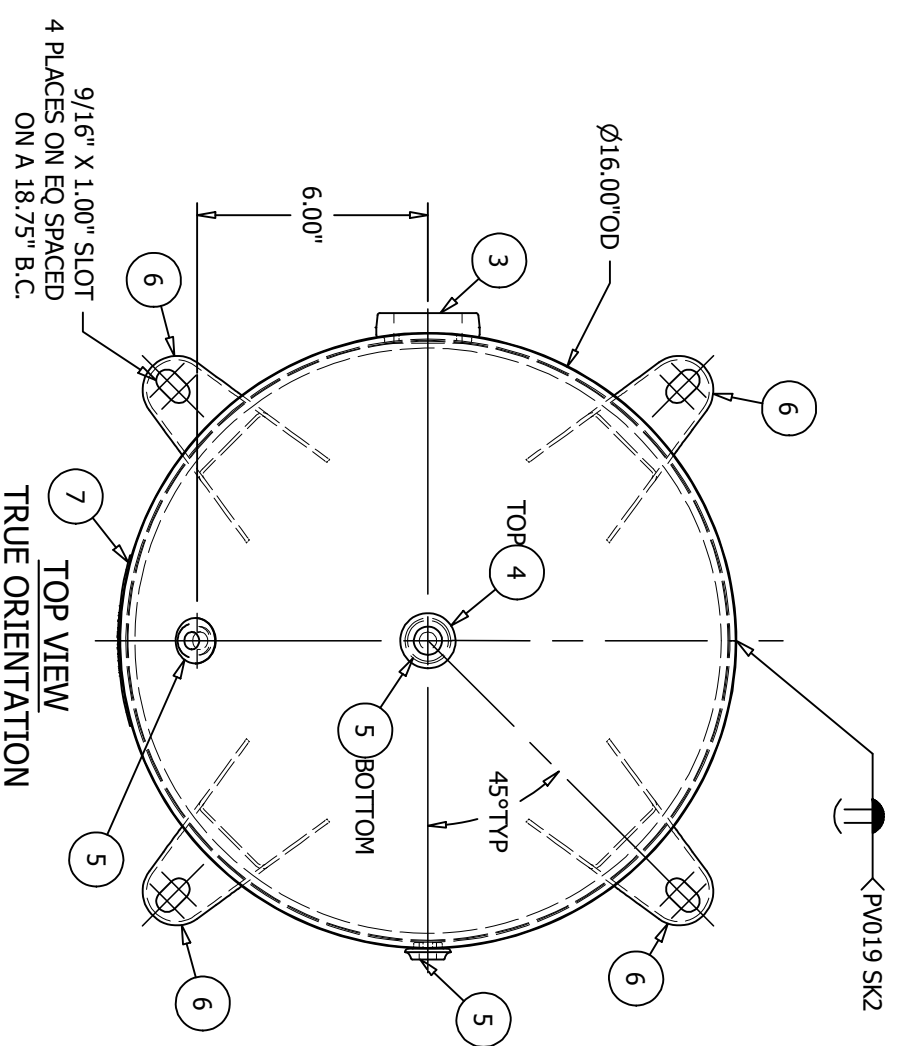
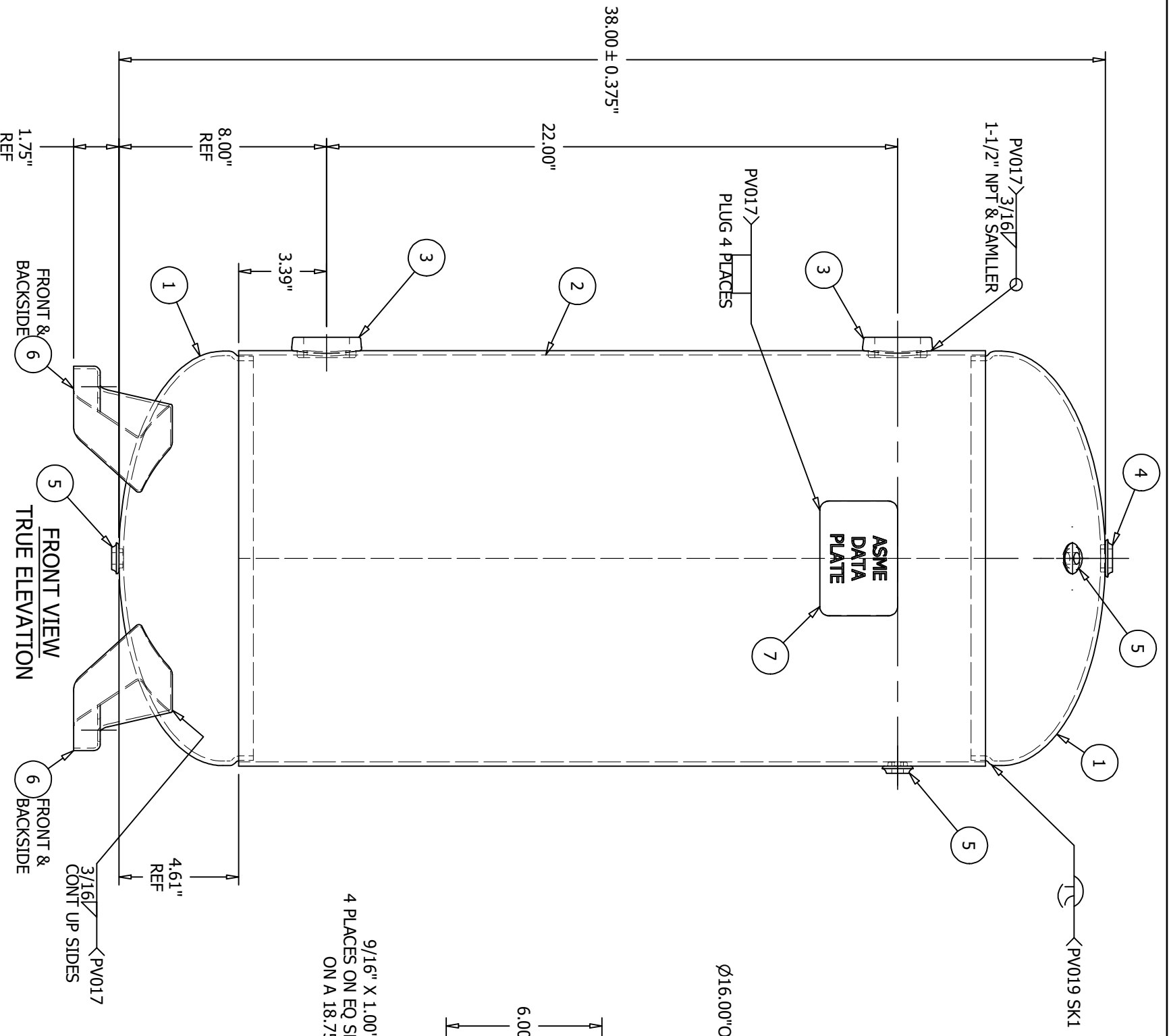


ITEM	P/N	DESCRIPTION	QTY
1	910-259	HEAD 16 OD .176 ELL .65 SF SA414 GR	2
2	A10040-300-SL	SHELL BURNT .164 CS SA414-G 28.78 X 16.00 OD	1
3	F101501	WELD FLG 1.500 NPT 957 SA181-70 RADUSED W/O-RING SEAT	2
4	F100500	WELD FLG 0.500 NPT CS SA181-70 FLAT 253	1
5	F100250	WELD FLG 0.250 NPT CS SA181-70 FLAT 251	3
6	S101453S	FOOT, H18X W/SLOT A1011CS-B USED ON 14" & 16" TANKS	4
7	A10040-300-NP	NAME PLATE FOR A10040 A1011CS-B	1



NOTES

**SHELL CUT SIZE IS REFERENCE ONLY

**PLUG & FITTING 0.50 EXT PROJ TYP

**HEAD THICKNESS SHOWN IS SPECIFIED MINIMUM

**RADIUS INSIDE PROJECTED EDGES OF NOZZLES 1/8" MIN

**SEE PAGE 2 FOR FINISH

**FLANGE BOLT HOLES STRADDLE TANK C/L EXCEPT AS NOTED

**ALL DIMS IN INCHES UNLESS NOTED OTHERWISE

**IMPACT TEST EXEMPT PER UG 200(f)

16" X 38" 300# VERTICAL AIR RECEIVER

REV	DATE	DESCRIPTION	ENG	QCM	AI/DATE
1	10/15/18	UPDATED TO DIVISIONAL WELD PROCEDURES	MG	BW	NA
2	8/3/21	ADDED JOINT DETAIL SKETCH	RM	N/A	

RELEASED TO PRODUCTION		TOOLERANCES ARE PER EN1370	
SALES ORDER#		STEEL FAB STANDARD TOLERANCES UNLESS OTHERWISE SPECIFIED	
RELEASE DATE:		QTY:	
NBS/SERIAL#			
HEAD THK: .176	MIN C.A.: ---	MATL SA414-G	EFF 85 %
SHELL THK: .164	NOM C.A.: ---	MATL SA414-G	EFF 70 %
MATL BD: YES	STAMP " U "		
VOLUME: 30	GAL	MAMP 300	PSI AT 400 .F
SHIPPING WEIGHT: 105	LBS	MDMT -20	.F AT 300 .PSI
CRN: NONE		TEST: HYDRO	AT 390 .PSI
		TEST: PNEU	AT 390 .PSI
DESIGN & CALCULATIONS COMPLY WITH ASME CODE SECTION VIII, DIV.1. LATEST EDITION		SPVG STOCK	
TRAVELER REQUIRED <input type="checkbox"/> NO		IF YES THEN FIXTURE # _____	
DESIGN & CALCULATIONS COMPLY WITH ASME CODE SECTION VIII, DIV.1. LATEST EDITION		STEEL FAB	
BURKINGTON, ONT		LEBANON, VA	
DATE: 7/17/2018	DRAWN BY: MG	P/N: A10040-300	PAGE 2
ENG. APP'L / DATE: MH - 7/23/2018		REV: 10F2	
QCM, APP'L / DATE: BW - 7/24/2018			
A.I. VERIFICATION / DATE: BQ - 7/25/2018			