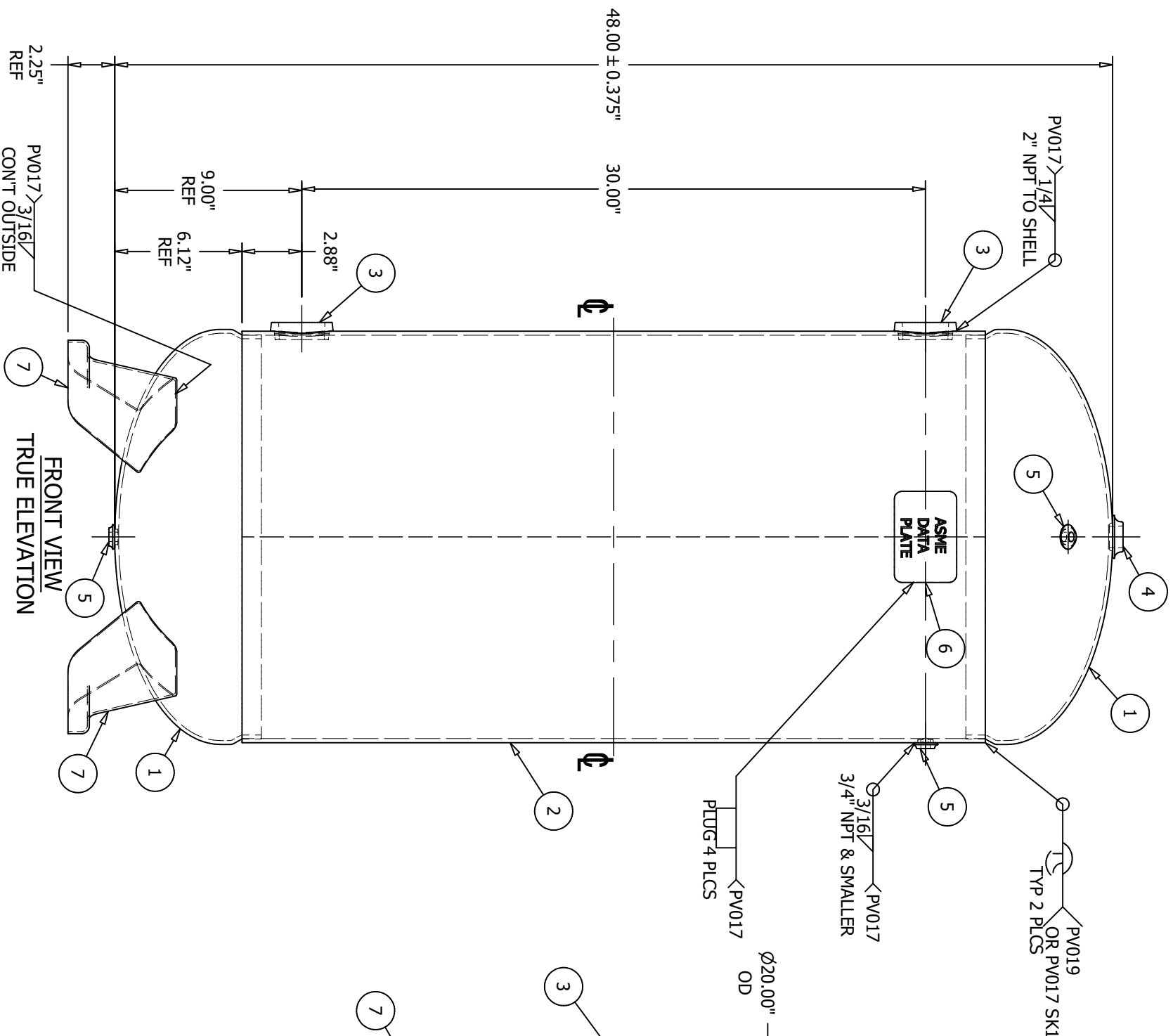
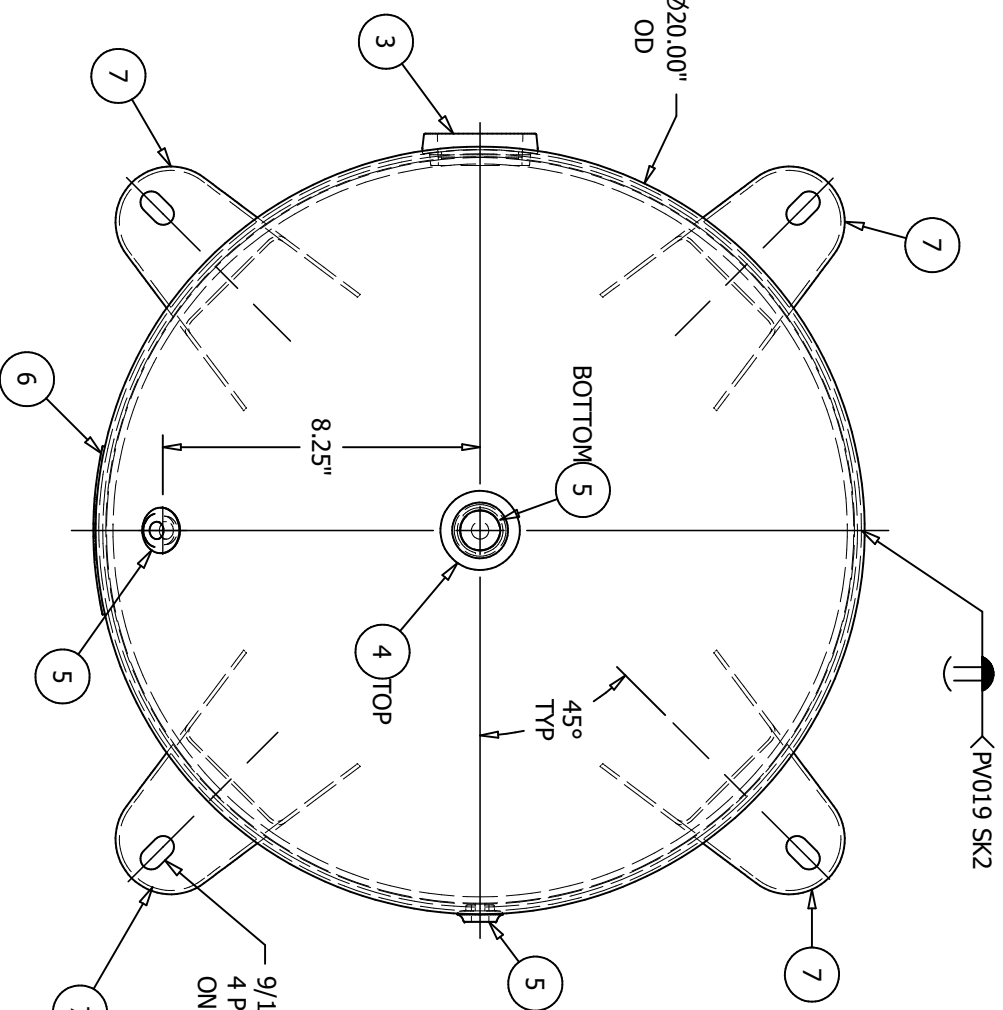


ITEM	P/N	DESCRIPTION	QTY
1	H201873-414G	HEAD, 0.177 MI, 0.187 N X 20" 2:1 JOGGLE W/ 1.96" SF SA414-G	2
2	A10043-300-SL	SHELL BURNT 0.200 CS SA414-G 35.75 X 20.00 OD	1
3	F102001	WELD FLG 2.000 NPT CS SA181-70 RAD 958 O/R	2
4	F100750	WELD FLG 0.750 NPT CS SA181-70 FLAT 254	1
5	F100250	WELD FLG 0.250 NPT CS SA181-70 FLAT 251	3
6	A10043-300-NP	NAME PLATE FOR A10043-300 AS69	1
7	S100003S	FOOT, H20X FOR 20" HORIZ & VERT W/ 9/16 X 1 SLOT A1011CS-B	4



FRONT VIEW
TRUE ELEVATION



TOP VIEW
TRUE ORIENTATION



**SHELL CUT SIZE IS REFERENCE ONLY
 **PLUG & FITTING 0.50 EXT PROJ TYP
 **HEAD THICKNESS SHOWN IS SPECIFIED MINIMUM
 **RADIUS INSIDE PROJECTED EDGES OF NOZZLES 1/8" MIN
 **SEE PAGE 2 FOR FINISH
 **FLANGE BOLT HOLES STRADDLE TANK C/L EXCEPT AS NOTED
 **ALL DIMS IN INCHES UNLESS NOTED OTHERWISE
 **IMPACT TEST EXEMPT PER UG 20(F)
 20" X 48" 300# VERTICAL AIR RECEIVER
 NOTES

9/16" X 1" SLOT
 4 PLCS EQ SPACED
 ON A 23.75 B.C.

REV	DATE	DESCRIPTION	ENG	QCM	AJ/DATE
3	8/19/20	UPDATED CRN	RM	N/A	N/A
4	8/3/21	ADDED JOINT DETAIL SKETCH	RM	N/A	BQ 8/3/21
5	9/29/22	REMOVED CRN	MG	N/A	N/A

RELEASED TO PRODUCTION		TRAVELER REQUIRED <input type="checkbox"/> No		FIXTURE REQUIRED <input checked="" type="checkbox"/> Yes	
SALES ORDER#		TOLERANCES ARE PER EN1 370		DESIGN & CALCULATIONS COMPLY WITH	
RELEASE DATE:		STEEL FAB STANDARD TOLERANCES		ASME CODE SECTION VIII, DIV.1.	
NB/SERIAL#		QTY:		LATEST EDITION	
HEAD THK: .177 MIN C.A.: ...		MATERIAL SA414-G EFF 85 %		SPVG STOCK	
SHELL THK: .200" NOM C.A.: ...		MATERIAL SA414-G EFF 70 %		A.I. VERIFICATION / DATE	
MATERIAL: SA414-G		STAMP " U "		BURLINGTON, ONT	
VOLUME: 60 APPROX GAL		MAWP 300 PSI AT 400 °F		LEBANON, VA	
SHIPPING WEIGHT: 190 LBS		MIDMT -20 °F AT 300 PSI		DRAWN BY: IDV/AO	
TEST: HYDRO		TEST: HYDRO AT 390 PSI		P/N	
TEST: PNEU		TEST: PNEU AT 390 PSI		A10043-300	
DATE: 12/9/2015		DATE: 12/9/2015		PAGE	
				REV	
				5	