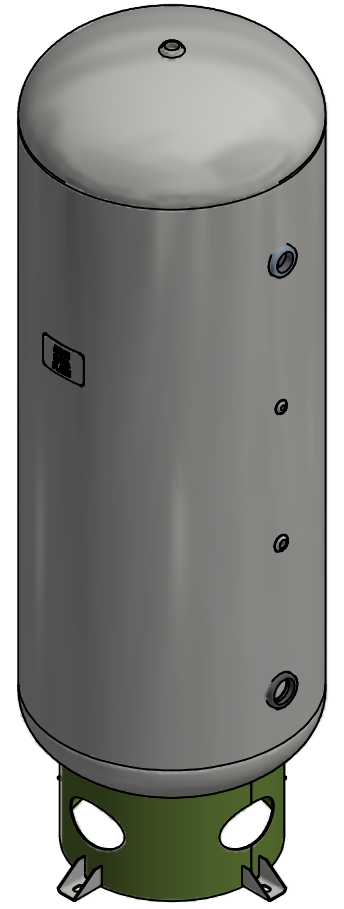
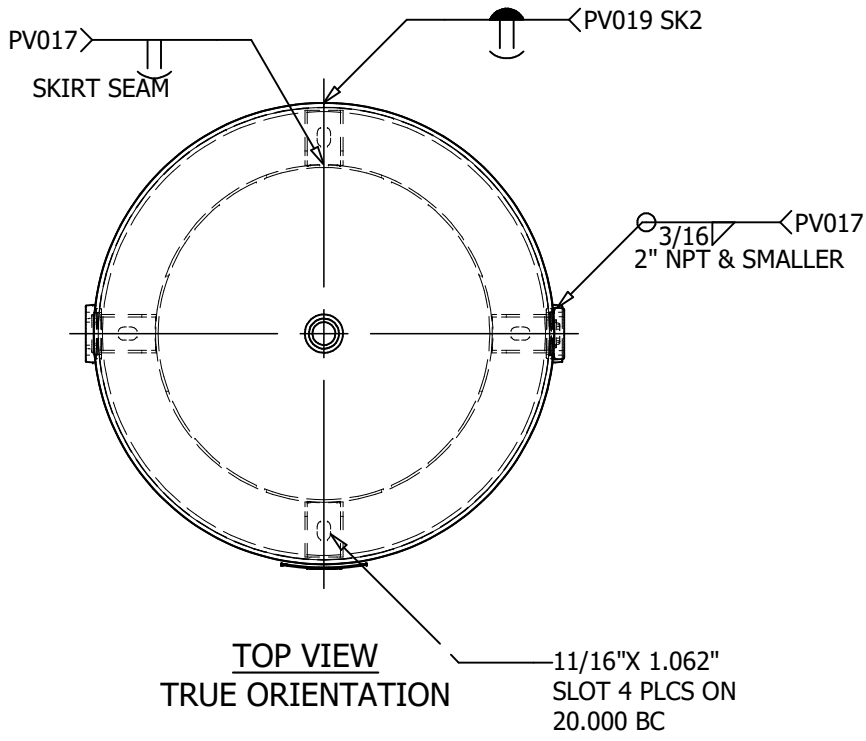
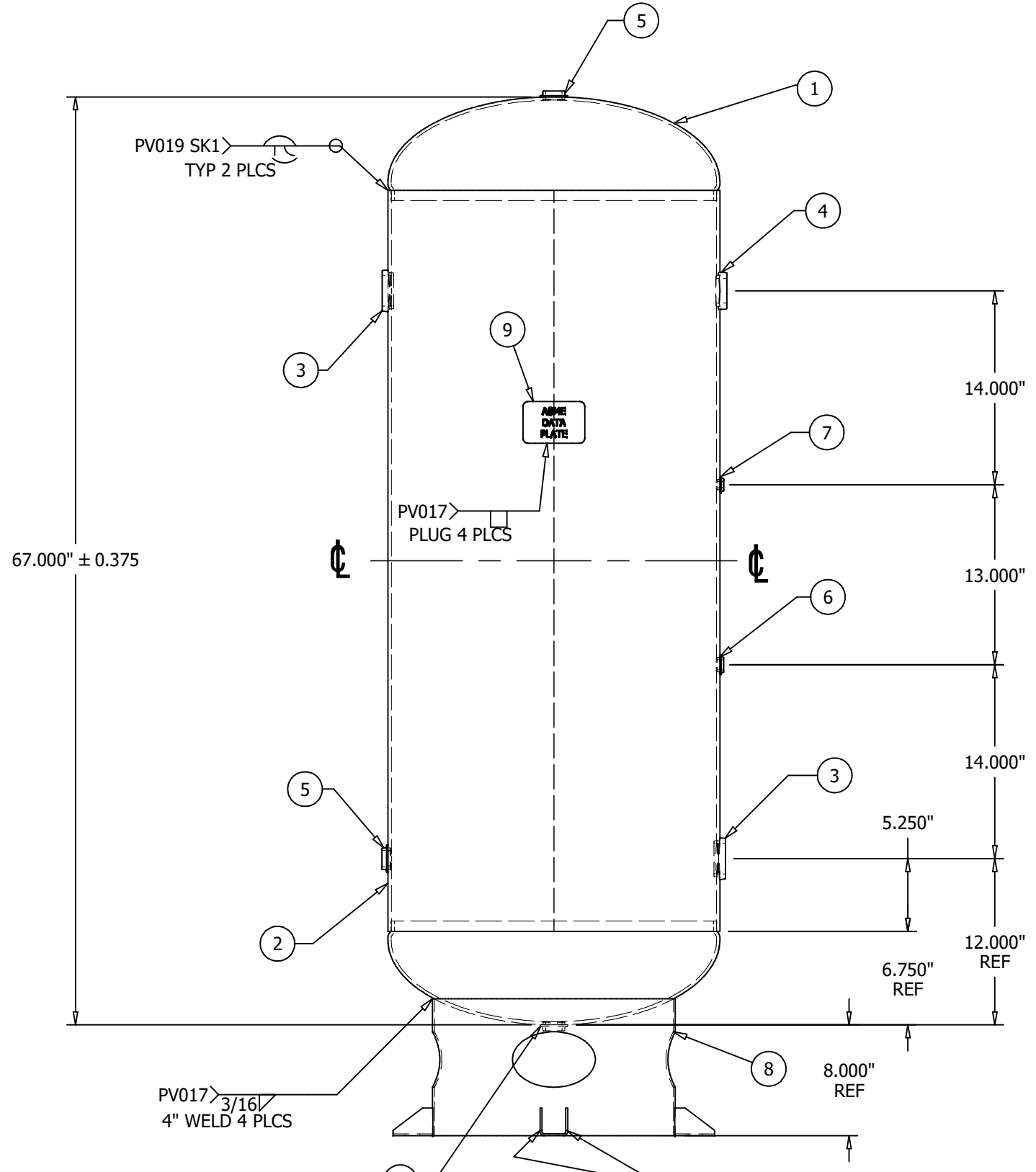


| ITEM | P/N           | DESCRIPTION   | QTY |
|------|---------------|---|-----|
| 1    | H24224J       | HEAD 24.00 OD 0.235M/0.250N SA414G SE 2:1 W/1.250 SF JOG            | 2   |
| 2    | A10049-300-SL | SHELL BURNT 0.250 CS SA455 53.5 X 24.00 OD                          | 1   |
| 3    | F102001       | WELD FLG 2.000 NPT CS SA181-70 RAD 958 O/R                          | 2   |
| 4    | F101501       | WELD FLG 1.500 NPT CS SA181-70 RAD 957 O/R                          | 1   |
| 5    | F101000       | WELD FLG 1.000 NPT CS SA181-70 FLAT 255                             | 3   |
| 6    | F100500       | WELD FLG 0.500 NPT CS SA181-70 FLAT 253                             | 1   |
| 7    | F100250       | WELD FLG 0.250 NPT CS SA181-70 FLAT 251                             | 1   |
| 8    | S102230       | SKIRT ASY, 17.50 OD A1011CS-B W/ 8.000 CLR, 20.50 BC FOR 24 OD TANK | 1   |
| 9    | A10049-300-NP | NAME PLATE FOR A10049   | 1   |



\*\*SHELL CUT SIZE IS REFERENCE ONLY  
 \*\*SEE PAGE 2 FOR PAINT  
 \*\*SHIPPING WEIGHT: 410#  
 \*\*IMPACT TEST EXEMPT PER UG 20(f)

24"x 67" VERTICAL AIR RECIEVER  
 NOTES

|                        |    |                      |    |
|------------------------|----|----------------------|----|
| TRAVELER REQUIRED      | No | REQUISITION REQUIRED | No |
| RELEASED TO PRODUCTION |    | CALCULATED MINIMUMS  |    |
| SALES ORDER#           |    | HEAD THK: .197" MIN  |    |
| RELEASE DATE:          |    | SHELL THK: .239" MIN |    |
| NB/SERIAL#             |    |                      |    |

DESIGN & CALCULATIONS COMPLY WITH  
 ASME CODE SECTION VIII, DIV1.  
 LATEST EDITION AND ADDENDA

|                      |             |                         |          |
|----------------------|-------------|-------------------------|----------|
| HEAD THK: .224" MIN  | C.A.: ---   | MAT'L SA414-G           | EFF 85 % |
| SHELL THK: .250" NOM | C.A.: ---   | MAT'L SA455             | EFF 70 % |
| NAT'L BD: YES        | STAMP " U " | MAEWP --- PSI AT --- °F |          |
| VOLUME: APPROX 120   | GAL         | MAWP 300 PSI AT 400 °F  |          |
| CRN: L4035.5612T3    |             | MDMT -20 °F AT 300 PSI  |          |
| REF:                 |             | TEST: HYDRO AT 390 PSI  |          |
|                      |             | TEST: PNEU AT 390 PSI   |          |

CATALOG A10049  
 @ 300 PSI

ENG. APP'L / DATE  
 JE - 2/4/2010

QCM. APP'L / DATE  
 BW 2/5/2010

A.I. VERIFICATION / DATE  
 BQ 2/5/2010

FRONT VIEW  
 TRUE ELEVATION

P/N A10049-300

| REV | DATE     | DESCRIPTION                           | ENG | QCM | AI/DATE    |
|-----|----------|---------------------------------------|-----|-----|------------|
| 3   | 7/11/18  | REVISED NP LOCATION TO NEW STANDARD   | MG  | BW  | BQ 7/24/18 |
| 4   | 10/15/18 | UPDATED TO DIVISIONAL WELD PROCEDURES | MG  | BW  | N/A        |
| 5   | 3/1/2021 | UPDATED CRN                           | RM  | N/A | N/A        |
| 6   | 8/3/21   | ADDED JOINT DETAIL SKETCH             | RM  | N/A |            |

STEEL FAB

OAKVILLE, ONT. ABINGDON, VA.

DRAWN BY: KRG P/N A10049-300

DATE: 2/1/2010

PAGE 1 OF 2 REV. 6