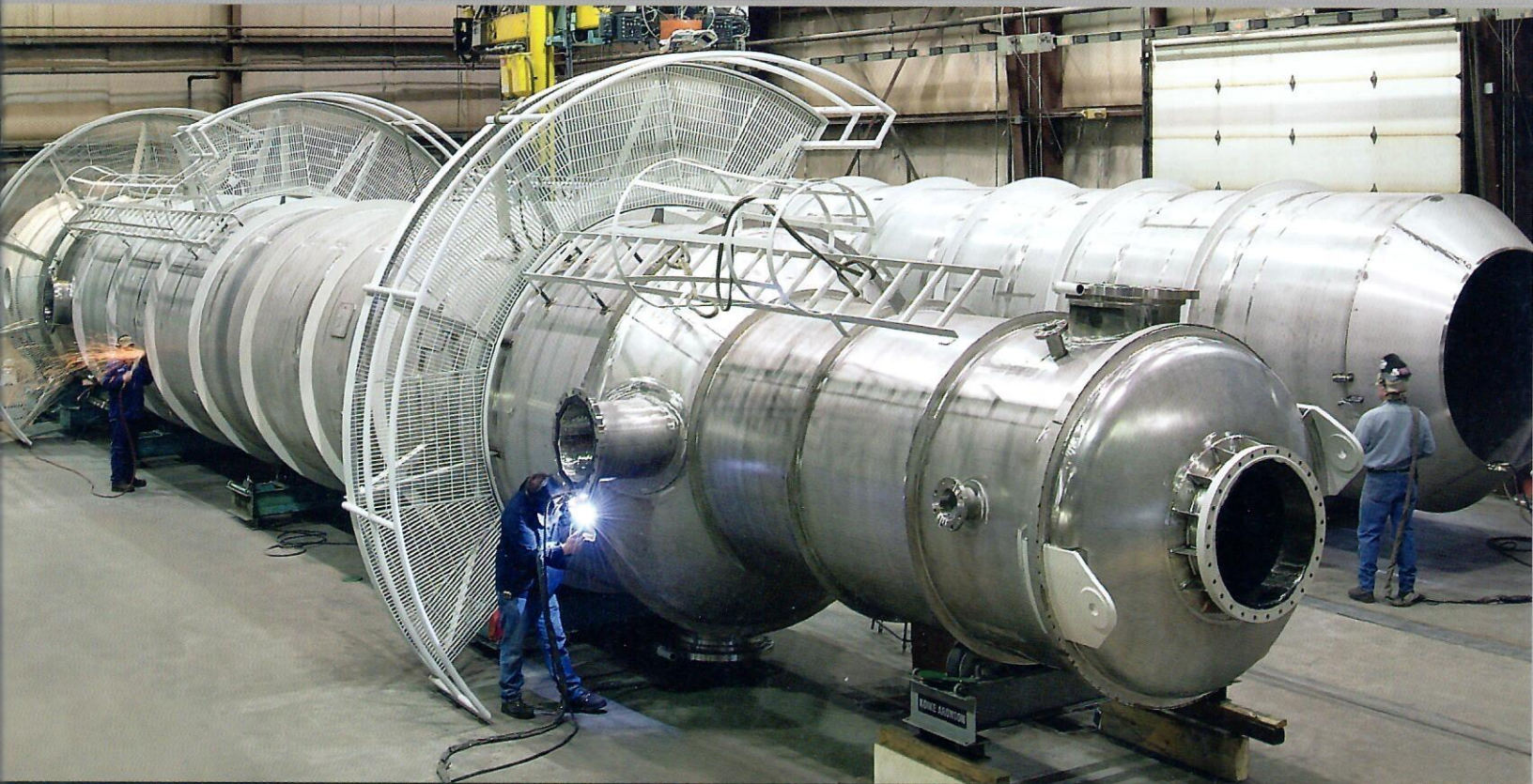


SPVG

SAMUEL Pressure Vessel Group



Global Leader in Pressure Vessel Fabrication

At a Glance

- Over 750 employees dedicated to excellence
- One of North America's largest manufacturers of pressure vessels
- Wide range of manufacturing capabilities
- Over 750,000 square feet of manufacturing floor space
- Numerous quality certifications (ASME, ISO, CE/PED, SELO, ABS, DNV, etc.)
- Products available in Carbon Steel, Stainless Steel, Hastelloy, Inconel, Alloy 20, Monel, AL6XN, etc.
- Products range from basic receiver vessels to highly engineered evaporator towers
- Vessels range from 6" diameter and 20 lb to 16' in diameter and over 160,000 lb
- Quantities range from 1 piece engineered to order products to annual quantities of 10,000 pieces managed through kanban, JIT and consignment stocking programs



The Capabilities

- Vessels from 6" to 192" in diameter
- Carbon steel, stainless steel, and higher alloys
- Pressure from full vacuum to 3,000+ PSI
- Fabrications up to 160,000 lb plus
- CNC plate rolling
- CNC punching
- CNC laser cutting
- High definition plasma cutting
- Robotic welding
- Robotic plasma burning
- Half pipe and dimple jackets



Product Types

- Air Receivers
- Air Brake/Air Starter Receivers
- Water Treatment Vessels
- Oil Separators
- Filter Housings
- Pressure Pots
- Process Tanks
- Heat Exchangers
- Fluid Storage Tanks
- DOT Shipping Containers
- Hyperbaric Chambers
- Reactors
- Fermentors
- Evaporators and Dryers
- Digesters
- Portable Batch Equipment
- Calandrias
- Tank Heads and other Components
- ASME B31.3 Process Piping

Material of Construction

- Carbon Steel
- Stainless Steel
- High alloys including Hastelloy, Inconel, Alloy 20, Monel, AL6XN, etc.
- Aluminum (pressure vessel heads)

Engineering

- ASME Section VIII Division I
- Compress
- Inventor Solid Modeling
- 25 Person Design Team

***Experience with
"Engineered Spec Jobs"***

Finishing Options

- Powder Coating
- Enamel Wet Paint
- Primer Coat
- Epoxy Lining
- Rubber Lining
- Mechanical Polished Stainless Steel
- Electro Polished Stainless Steel
- Galvanized Finish
- Plating
- PVC Coating

Specialized Testing Options

- Radiography
- Dye Penetrant
- Ultrasonic
- Helium Gas Test
- Riboflavin
- RA Finish
- Borescope
- Saline Test
- Positive Material Identification (PMI)

Wide Variety of Vessel Codes

- | | |
|----------------|----------|
| • ASME | • MOM |
| • CE/PED | • NR-13 |
| • AD-Merkblatt | • GOST |
| • MHWL | • B31.1 |
| • SAEJIO | • AS1210 |
| • USCG | • API |
| • CRN | • SELO |
| • DOT/UN | • DNV |

(Please call for codes not listed above.)

Other Services

- Documentation Packages Available
- On-site Inspection Coordination

The Products



Shipping containers, filters, and air receivers



Process tanks



Lethal service storage vessels



Hyperbaric chamber



Industrial ASME air receivers



Water filtration tanks



Reactor vessel



Commercial ASME air receivers



Shell & tube heat exchangers



Paint pots

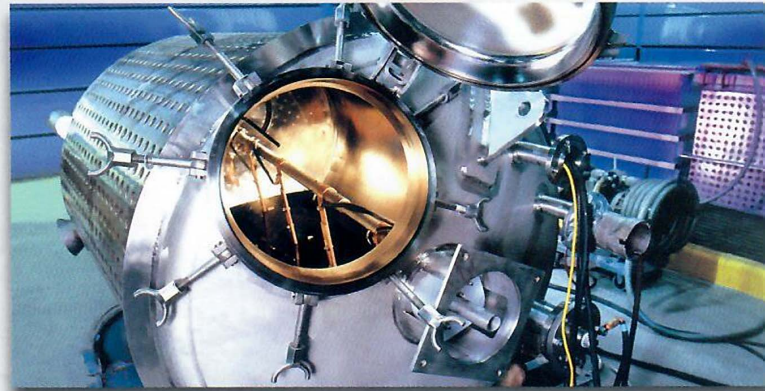


130,000 lb Shell and tube heat exchanger

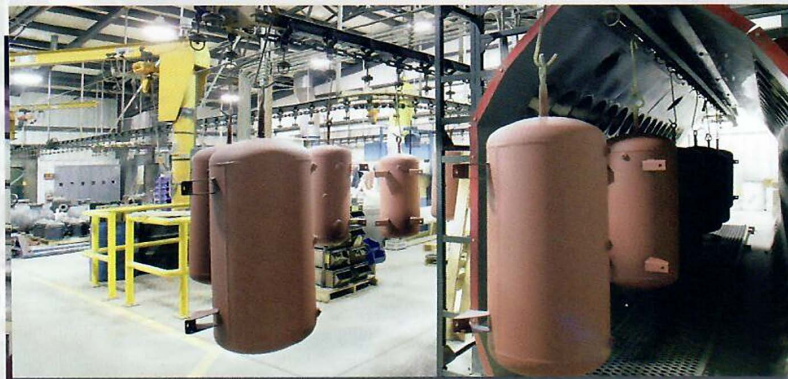
The Equipment



Full penetration half pipe – automated welding



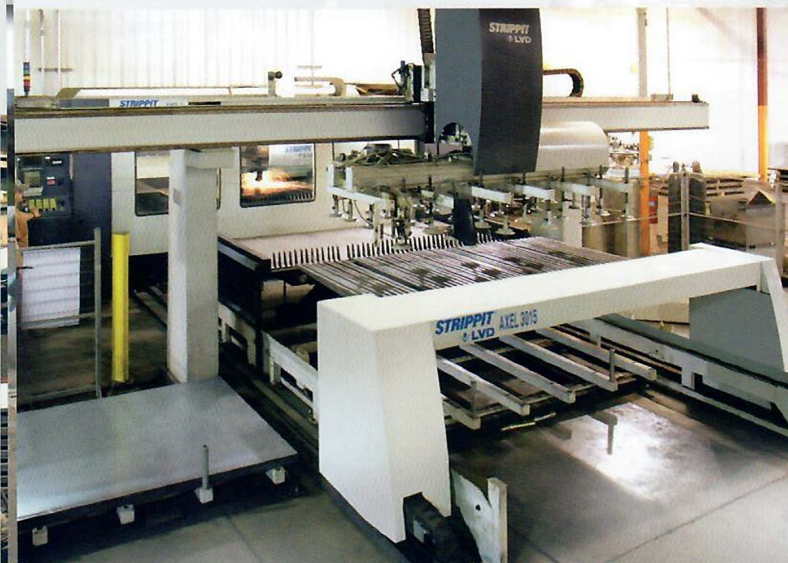
Electro-polishing systems



Conveyor driven finishing lines



High definition plasma burning



Laser burning machine



In house x-ray testing chamber and equipment



Robotic welding



Flow lines for standard products



Tank head forming equipment



In house machining



Heavy wall welding & material handling equipment